

M★PS
WONDERS

VICENTE I



VICENTE
TABLE LAMP I

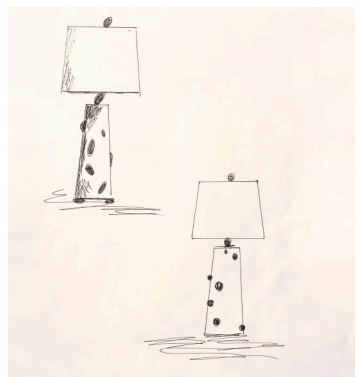
A Masterpiece of Marble and Hand-Cast Bronze, Designed by Antonia Pintado

Vicente is a true masterpiece in the realm of table lamps. This extraordinary work of art boasts a marble base adorned with meticulously hand-cast bronze accents, bearing the hallmark of exceptional craftsmanship. Designed by the artist Antonia Pintado, Vicente stands as a captivating embodiment of elegance, sophistication, and artistic ingenuity, poised to elevate your living space to unprecedented levels of refinement.

Vicente is distinguished by its foundation of exquisite marble, a symbol of timeless beauty and refinement. The marble base is adorned with intricately hand-cast bronze accents, showcasing the skilled craftsmanship of artisans. Notably, the lamp holder, where functionality meets artistry, is also meticulously crafted from bronze, creating a seamless and harmonious design.

About the Designer: Antónia Pintado

The brilliant mind behind Vicente, Antónia Pintado, envisioned a design that flawlessly harmonizes marble's ethereal beauty with the classical charm of hand-cast bronze. The result is a table lamp that transcends mere illumination, becoming a sculptural masterpiece that gracefully melds traditional allure with contemporary sophistication.



Antonia Pintado, Sketch, Prototype table light, 2020.

Photo: Mapswonders, Portugal, 2020

VICENTE
TABLE LAMP I

Technical information

MATERIALS

Cast Brass

Marble

WEIGHT

15Kg (33lbs)

OVERALL DIMENSIONS

Height - 87cm | 34,2"

Width - 55cm | 21,6"

Depth - 55cm | 21,6"

ILLUMINATION

120V - 240V

60W output

Accepts (1/2) E26 . E27

Halogen - LED

Dimmable

LAMPSHADE DIMENSIONS

Height - 30cm | 11,8"

Top diameter - 40cm | 15,8"

Base diameter - 55cm | 21,6"



Customization - Available

Lead time - 8 weeks

Shipping & Delivery - Mapswonders customer service will assist you shipping your order to anywhere around the globe

Certifications - Mapswonders products are CE certified

Contract - Mapswonders has the ability to customize existing products or new products to meet contract specifications.

These orders require customized pricing considering quantity and features.

Contact Mapswonders at info@mapswonders.com





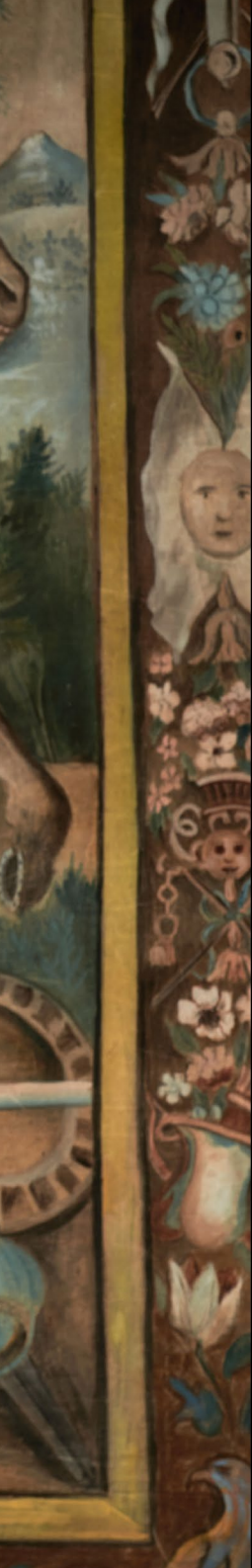
Each Piece is Unique

As a result of the artisanal creation process, each Vicente lamp is a unique work of art. Variations in marble veining and bronze decorations ensure that each piece carries its own distinct character, adding depth and individuality to your investment.

Table Lamp, version I, II, III, IV







CATALOGUE REQUEST

Email . info@mapswonders.com

Phone . 00351 913 220 275

SAMPLES REQUEST

Email . vascopintado@mapswonders.com

Phone . 00351 913 220 275

CLIENT ACCOUNTS

Email . vascopintado@mapswonders.com

Phone . 00351 913 220 275

FINANCIAL SERVICES

Email . mariapintado@mapswonders.com

Phone . 00351 913 220 275



Mapswonders | A Timeless Luxury

