

M★PS

W O N D E R S

SACRAMENTO



SACRAMENTO CEILING LAMP

An Ethereal Balance of Light and Form

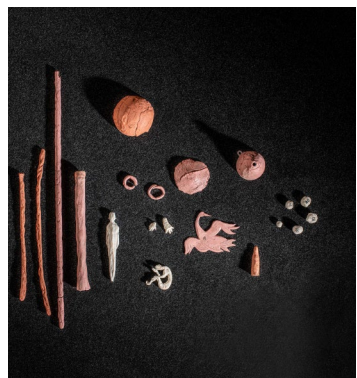
The Sacramento ceiling lamp is a striking sculptural piece that merges geometry, balance, and light into a seamless artistic composition. Crafted from fine plaster, its circular ring encases a suspended sphere, evoking a sense of celestial harmony and weightlessness. The interplay between the solid structure and the floating element creates an intriguing tension, as if the piece defies gravity, inviting the viewer to contemplate the delicate equilibrium of forms.

The use of plaster enhances its organic, almost ethereal quality, allowing light to interact subtly with its textured surface. This material choice not only lends a timeless elegance but also highlights the artisanal craftsmanship behind the piece. Suspended in space, Sacramento is more than just a lighting fixture—it is an architectural statement, an embodiment of refined simplicity that transforms interiors into curated environments of sophistication.

Designed to transcend function, Sacramento establishes a dialogue between light and shadow, form and void, making it a perfect addition to contemporary and avant-garde settings. Its poetic presence resonates within artful spaces, celebrating the beauty of minimalism and the profound impact of sculptural design.

About the Designer: Vasco Pintado

Vasco Pintado is recognized for his exceptional ability to blend traditional craftsmanship with contemporary elegance. His work transcends mere functionality, transforming lighting and furniture into sculptural masterpieces. Drawing inspiration from the interplay between organic materials and refined design, Pintado creates pieces that elevate any space, offering a perfect balance of sophistication and artistic expression. His dedication to quality and innovation is evident in every creation, making each piece a unique statement.



Antomia Pintado, Plaster Molds, 2018
Image Mapswonders, Portugal, 2020

SACRAMENTO CEILING LAMP

Technical information

MATERIALS

Plaster

WEIGHT

15Kg (30 lbs)

OVERALL DIMENSIONS

Height - 90cm | 35,4"

Width - 90cm | 35,4"

Depth - 90cm | 35,4"

ILLUMINATION

Bulb type - Equipped with one (6) E12/E14 LED Bulb

Dimmable - Yes

Electrification - 120V - 240V, compatible with both EU and USA power systems

Power Output - 60W

Control - Foot on/off switch

CE

Customization - Available

Lead time - 8 weeks

Shipping & Delivery - Mapswonders customer service will assist you shipping your order to anywhere around the globe

Certifications - Mapswonders products are CE certified

Contract - Mapswonders has the ability to customize existing products or new products to meet contact specifications.

These orders require customized pricing considering quantity and features.

Contact Mapswonders at info@mapswonders.com

