

M★PS
WONDERS

HENRY



HENRY CEILING LAMP

A Sculptural Play of Light and Form

The Henry Ceiling Lamp is an extraordinary expression of modern design, where geometry and artistry converge to create an illuminating sculpture. Crafted from a harmonious combination of brass and frosted glass, this striking fixture balances elegance with asymmetry, making it a captivating focal point in any interior.

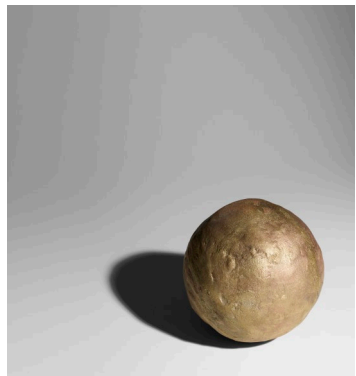
At its core, an antique brass structure forms the foundation, supporting eight meticulously crafted lacquered metal diffusers. Each diffuser extends outward in a seemingly irregular yet carefully considered arrangement, contributing to the fixture's distinctive sculptural presence. While the lamp maintains an overarching circular silhouette, the intentional misalignment of its arms introduces a sense of movement and depth, enhancing its visual impact. The variation in heights and orientations of the diffusers creates a playful contrast between structure and fluidity, ensuring that Henry is perceived as more than just a functional lighting piece—it is an artwork in its own right.

The frosted glass diffusers gently soften the light, producing a warm and inviting glow that subtly shifts across the space, enriching the ambience with a dynamic interplay of illumination and shadow. This nuanced diffusion ensures a comfortable yet sophisticated atmosphere, ideal for luxury interiors, contemporary settings, and artistic environments.

Whether suspended over a dining table, in a grand foyer, or as a statement piece in a living room, the Henry Ceiling Lamp transforms spaces with its unique architectural presence. Its ability to redefine spatial perception through the interaction of light, form, and materiality makes it an exceptional choice for those who appreciate innovative, sculptural lighting designs.

About the Designer: Vasco Pintado

Vasco Pintado is recognized for his exceptional ability to blend traditional craftsmanship with contemporary elegance. His work transcends mere functionality, transforming lighting and furniture into sculptural masterpieces. Drawing inspiration from the interplay between organic materials and refined design, Pintado creates pieces that elevate any space, offering a perfect balance of sophistication and artistic expression. His dedication to quality and innovation is evident in every creation, making each piece a unique statement.



Dissonance, Brass Molds, 2023
Image Mapswonders, Portugal, 2023

**HENRY
CEILING LAMP**

Technical information

MATERIALS

Brass

Frosted glass

WEIGHT

30Kg (99 lbs)

OVERALL DIMENSIONS

Height - 80cm | 31,5"

Width - 168cm | 66,1"

Depth - 170cm | 66,9"

ILLUMINATION

Bulb type - Equipped with one (16) G9 LED Bulb

Dimmable - Yesz

Electrification - 120V - 240V, compatible with both EU and USA power systems

Power Output - 60W



Customization - Available

Lead time - 8 weeks

Shipping & Delivery - Mapswonders customer service will assist you shipping your order to anywhere around the globe

Certifications - Mapswonders products are CE certified

Contract - Mapswonders has the ability to customize existing products or new products to meet contact specifications.

These orders require customized pricing considering quantity and features.

Contact Mapswonders at info@mapswonders.com







